



# INDOFINE Chemical Company, Inc.

121 Stryker Lane, Bldg. 30, Suite 1 • Hillsborough, NJ 08844 • U.S.A.

Phone: (908) 359-6778 • FAX: (908) 359-1179

website: [www.indofinechemical.com](http://www.indofinechemical.com)

e-mail: [chemical@indofinechemical.com](mailto:chemical@indofinechemical.com)

## CERTIFICATE OF ANALYSIS

Catalog Number: 06-510

Product Name: DIHYDROBERBERINE

CAS Number: [483-15-8]

Lot Number: 2310858

Chemical Formula: C<sub>20</sub>H<sub>19</sub>NO<sub>4</sub>

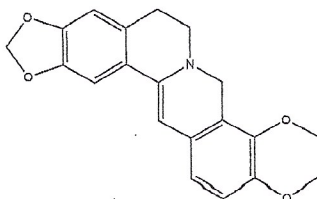
Molecular Weight: 337.37

Appearance: Yellow powder

Water Content: 0.9%

Storage: Store in a cool, dry place

Purity(HPLC): 98.9%



Prepared by:  
*Ramesh Mandadi*  
Ramesh Mandadi  
Director of Operations

Reviewed and Approved by:  
*Sujata Moton*  
Sujata Moton  
VP



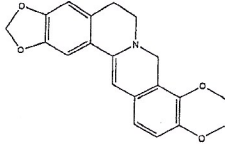
# INDOFINE Chemical Company, Inc.

121 Stryker Lane, Bldg. 30, Suite 1 • Hillsborough, NJ 08844 • U.S.A.

Phone: (908) 359-6778 • FAX: (908) 359-1179

website: [www.indofinechemical.com](http://www.indofinechemical.com)

e-mail: [chemical@indofinechemical.com](mailto:chemical@indofinechemical.com)



## HPLC ANALYSIS

Catalog No.: 06-510

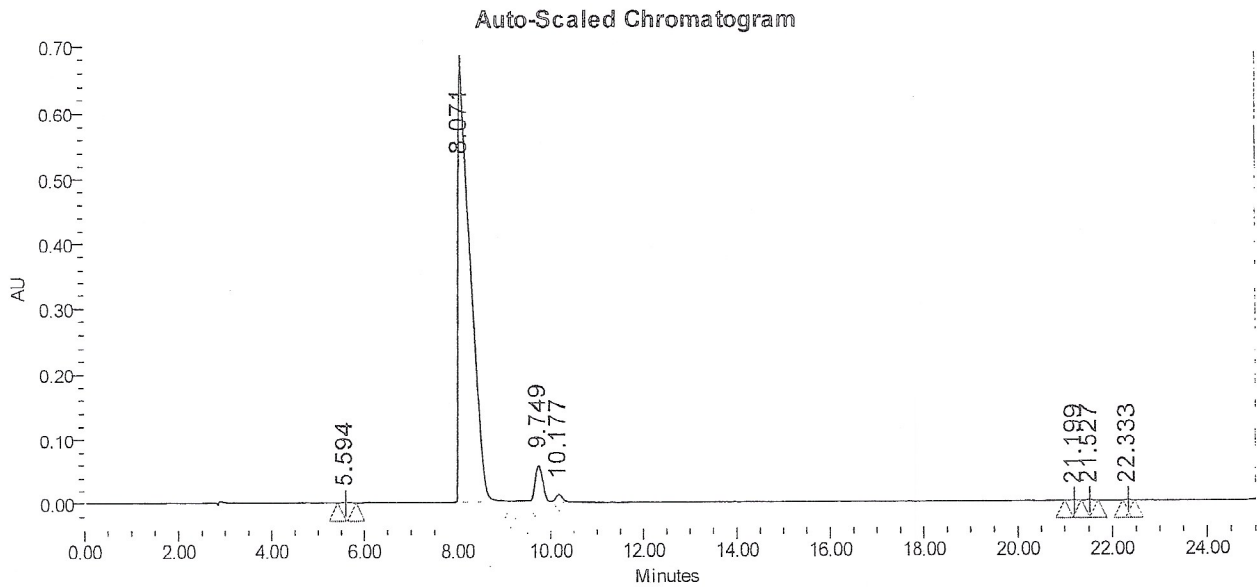
Product Name: Dihydroberberine

Lot No.: 2310858

### SAMPLE INFORMATION

Sample Name: Dihydroberberine  
Sample Type: Unknown  
Vial: 21  
Injection #: 1  
Injection Volume: 10.00 ul  
Run Time: 25.0 Minutes

Acquired By:  
Sample Set Name  
Acq. Method Set: Dihydroberberine  
Processing Method: sample  
Channel Name: PDA Ch1 265nm@4.8nm  
Proc. Chnl. Descr.: PDA Ch1 265nm@4.8nm



### Peak Results

	Name	RT	Area	% Area	Height (µV)	USP Plate Count	USP Resolution
1		5.594	6767	0.05	588	5623.32	
2		8.071	12165527	93.96	666858	3284.34	5.82
3		9.749	637095	4.92	56301	17174.43	3.90
4		10.177	116853	0.90	11553	23441.61	1.50
5		21.199	4699	0.04	565	57480.62	40.35
6		21.527	8751	0.07	1438	290787.63	1.51
7		22.333	7543	0.06	1402	377908.46	5.28